

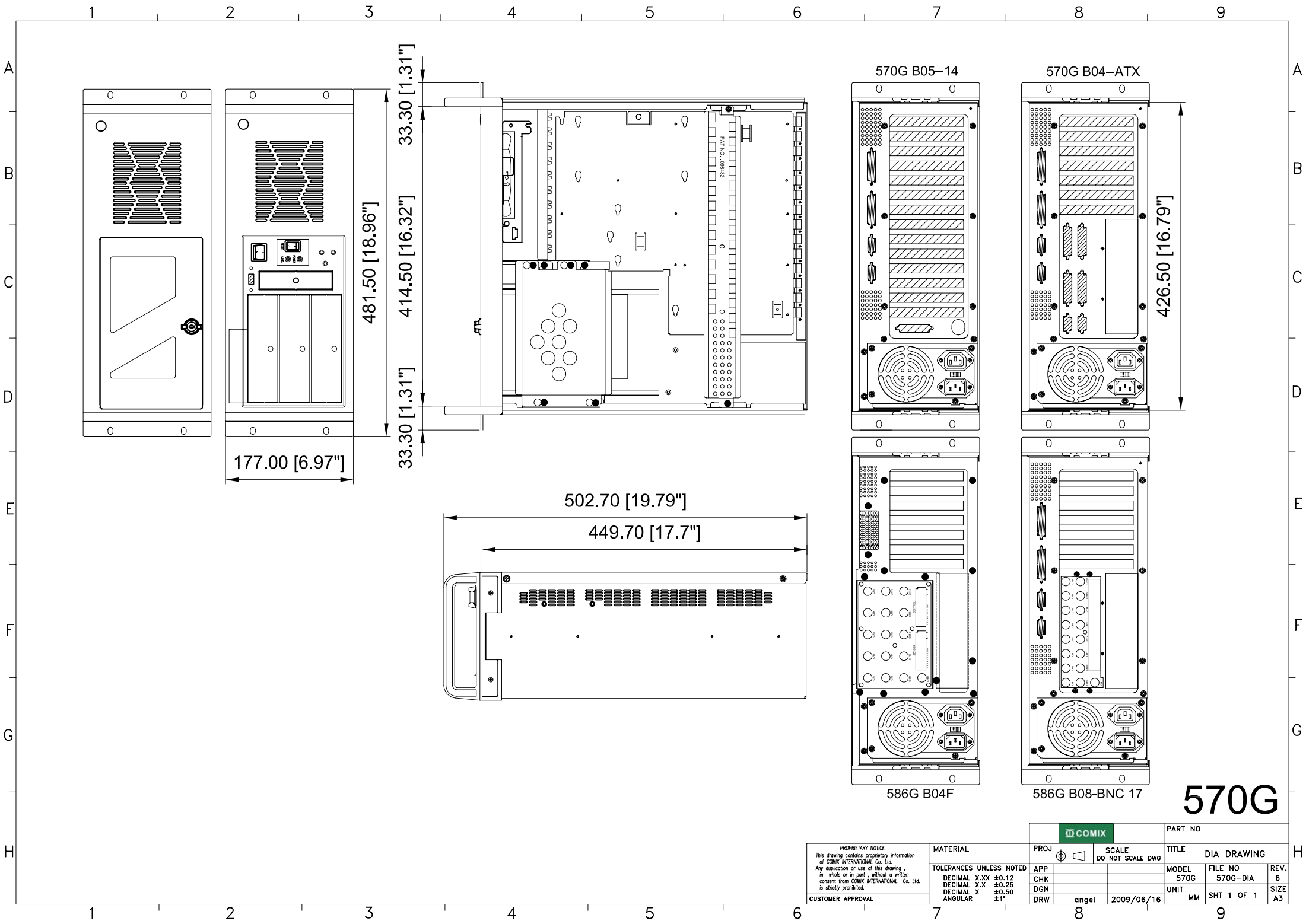
RM-570G

19" Rackmount Chassis 4U



SPECIFICATION:

- Drive bays: 3 x 5.25" FDD + 1 X 3.5" FDD + 1 x 3.5" HDD
- Cooling: 12 x 12 cm intake fan
- For main board of single board 14 half size or ATX 12"x9.6" or Micro ATX 9.6"x9.6" or Mini-ITX 6.6"x6.6" or BNC board
- Speaker: 8ohm 0.25W
- Air filter washable
- Power supply (Options):
 - PS/2 power supply 300W/400W/500W~1000W
 - Mini redundant power supply 300W/400W/500W
- Dimension: 45(D) x 42.65(W) x 17.7 (H) CM
- The RM-570G with the following different rear windows are for main board or BNC board:
 - ✚ Rear window - 570G B05-14
 - ✚ Rear window - 570G B04-ATX
 - ✚ Rear window - 586G B04F
 - ✚ Rear window - 586G B08-BNC 17



570G

PROPRIETARY NOTICE
 This drawing contains proprietary information of COMIX INTERNATIONAL Co. Ltd. Any duplication or use of this drawing, in whole or in part, without a written consent from COMIX INTERNATIONAL Co. Ltd. is strictly prohibited.

CUSTOMER APPROVAL

MATERIAL	
TOLERANCES UNLESS NOTED	
DECIMAL X.XX	±0.12
DECIMAL X.X	±0.25
DECIMAL X	±0.50
ANGULAR	±1°

COMIX		PART NO	
PROJ	SCALE	TITLE	
APP	DO NOT SCALE DWG	MODEL	DIA DRAWING
CHK		570G	570G-DIA
DGN		UNIT	REV.
DRW	angel	MM	6
	2009/06/16	SHT 1 OF 1	SIZE
			A3