

RM-608F3+U

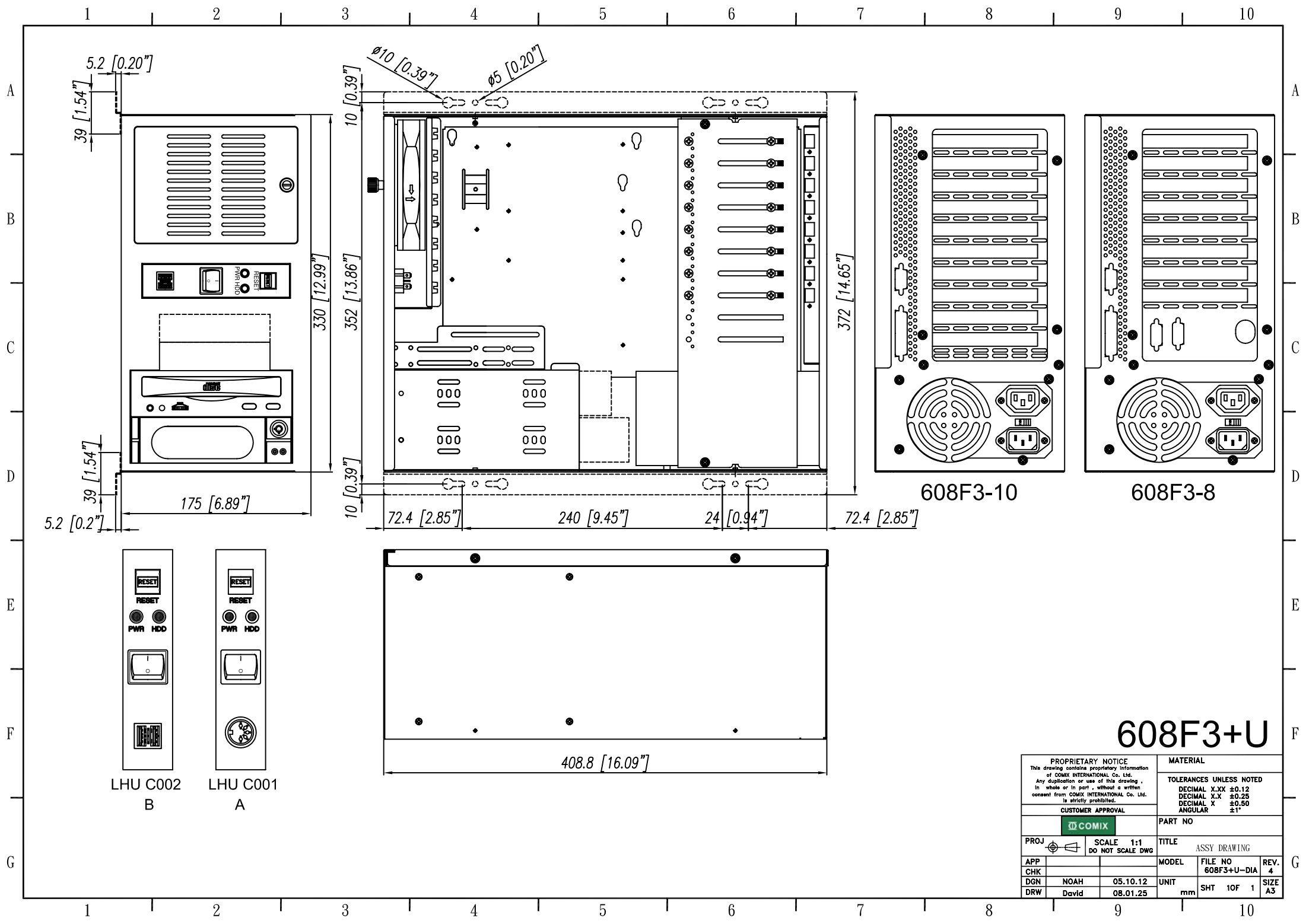
8 Slot / 10 Slot Wall Mount Chassis



SPECIFICATION:

- **Drive bays: 2 x 5.25" FDD
1 x 3.5" FDD
1 x 3.5" HDD**
- **Cooling: one 8 x 8 cm intake fan**
- **For main board of single board computer
8 long cards (608F3-8) or
8 long cards, 2 short cards (608F3-10)**
- **Power supply: PS2 power supply (Option)**
- **Air filter washable.**
- **2 USB ports**
- **Dimension: 41(D) x 33 (W) x 17.5 (H) CM**





608F3+U

PROPRIETARY NOTICE This drawing contains proprietary information of COMIX INTERNATIONAL Co. Ltd. Any duplication or use of this drawing, in whole or in part, without a written consent from COMIX INTERNATIONAL Co. Ltd. is strictly prohibited.		MATERIAL TOLERANCES UNLESS NOTED DECIMAL X.XX ±0.12 DECIMAL X.X ±0.25 DECIMAL X ±0.50 ANGULAR ±1°	
CUSTOMER APPROVAL 		PART NO	
PROJ	SCALE 1:1 DO NOT SCALE DWG	TITLE ASSY DRAWING	
APP	MODEL	FILE NO 608F3+U-DIA	REV. 4
CHK	NOAH	UNIT	SIZE A3
DRW David	05.10.12	SHT 10F 1	08.01.25