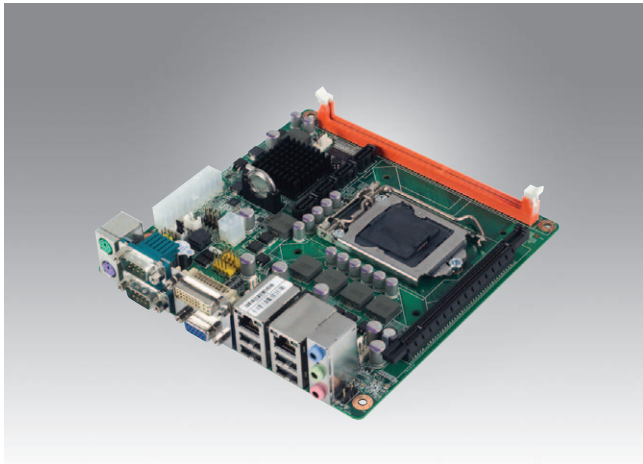


# AIMB-280

Intel® Core™ i7/i5/i3/Pentium® LGA1156 Mini-ITX with VGA/DVI, 2 COM, Dual LAN, PCIe x16



## Features

- Supports Intel® Core™ i7/i5/i3/Pentium® processor with Q57 chipset
- One DIMM socket supports up to 4 GB DDR3 800/1066/1333 MHz SDRAM
- Supports dual display, VGA and DVI, and dual GbE LAN
- Supports 2 COM, 8 USB, and 4 SATA ports
- Supports embedded software APIs and Utilities

**Software APIs:** SMBus H/W Monitor Watchdog

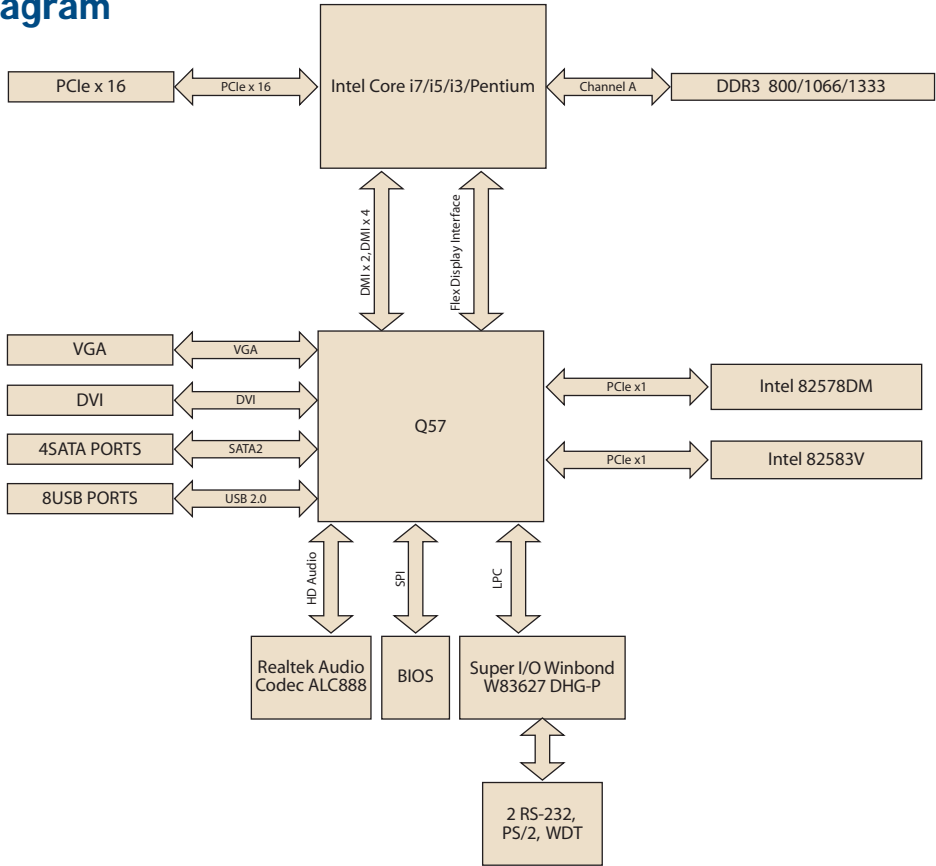
**Utilities:** BIOS flash eSOS Monitoring Embedded Security ID

Note: eSOS requires ODM BIOS, available by request

## Specifications

Processor System	CPU	Core i7	Core i5 700	Core i5 600	Core i3	Pentium	
	Max. Speed	4	4	2	2	2	
	Max. speed	2.93 GHz	2.66 GHz	3.3 GHz	3.06 GHz	2.8 GHz	
	Integrated Graphics	No	No	Yes	Yes	Yes	
	L3 Cache	8 MB	8 MB	4 MB	4 MB	3 MB	
	Chipset	Q57					
Expansion Slot	BIOS	AMI 64 Mbit SPI					
	PCI	-					
	Mini-PCI	-					
	PCIe x16 (Gen2)	8 GB/s per direction, 1 slot					
Memory	Technology	DDR3 800/1066/1333 MHz SDRAM					
	Max. Capacity	4 GB					
	Socket	1 x 240-pin DIMM					
Graphics	Controller	Intel HD Graphics					
	VRAM	1 GB maximum shared memory with 2 GB and above system memory installed					
Ethernet	Interface	10/100/1000 Mbps					
	Controller	GbE LAN1: Intel 82578DM, LAN2: Intel 82583V					
	Connector	RJ-45 x 2					
SATA	Max Data Transfer Rate	300 MB/s					
	Channel	4					
Rear I/O	VGA	1					
	DVI	1					
	Ethernet	2					
	USB	4 (USB 2.0 compliant)					
	Audio	3 (Mic-in, Line-out, Line-in)					
	Serial	2 (RS-232)					
	PS/2	2 (1 x keyboard and 1 x mouse)					
	USB	4 (USB 2.0 compliant)					
Internal Connector	Serial	-					
	IDE	-					
	SATA	4					
	CompactFlash	-					
	Parallel	-					
	IrDA	-					
	GPIO	-					
Watchdog Timer	Output	System reset					
	Interval	Programmable 1 ~ 255 sec/min					
Power Requirements	Power On	5 V	3.3 V	12 V	5 Vsb	-12 V	
		1.85 A	0.73 A	3.14 A	0.31 A	0.11 A	
Environment		Operating				Non-Operating	
	Temperature	0 ~ 60° C (32 ~ 140° F), depends on CPU speed and cooler solution				-20 ~ 70° C (-4 ~ 158° F)	
Physical Characteristics	Dimensions	170 mm x 170 mm (6.69" x 6.69")					

**Board Diagram**



**Ordering Information**

Part Number	Chipset	VGA	DVI	SW RAID	USB	COM	GbE LAN
AIMB-280QG2-00A1E	Q57	Yes	Yes	Yes	8	2	2

**Optional Accessories**

Part Number	Description
1700002204	Dual port USB cable (27 cm) with bracket
1960047670N001	LGA1156 CPU cooler for 2U and wallmount chassis

**Packing List**

Part Number	Description	Quantity
1700003194	SATA HDD cable	2
1703150102	SATA Power cable	2
1960019193T100	I/O port bracket	1
2002028010	Startup manual	1
2062028000	Driver CD	1

**Embedded OS/API**

OS/API	Part No.	Description
Win XPE	2070009652	XPE WES2009 Q57 AIMB-280/580/780 V4.0 ENG
	2070009653	XPE WES2009 Q57 AIMB-280/580/780 V4.0 MUJ24
Software API	205E280000	SUSI 3.0 SW API for AIMB-280 XP

**I/O View**



AIMB-280G2-00A1E