

RM-606A3+U

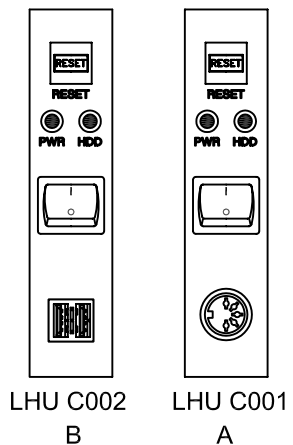
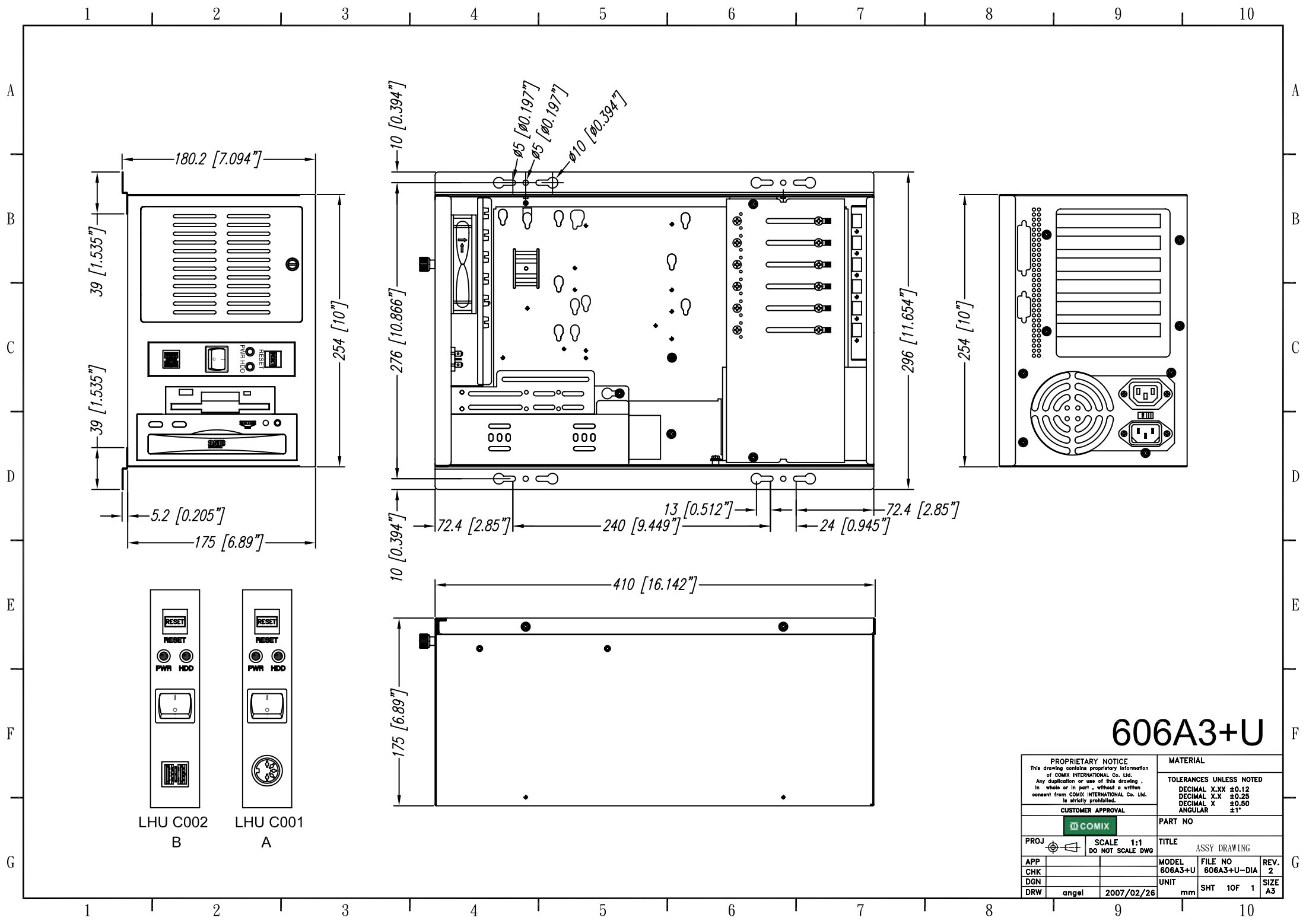
6 Slot Wall Mount Chassis



SPECIFICATION:

- **Drive bays:** 1 x 5.25" FDD
1 x 3.5" FDD
1 x 3.5" HDD
- **Cooling:** one 8 x 8 cm intake fan
- **Spece:** 5 long cards, 1 short card
- **For main board of 6 single board computer**
- **Power supply:** PS2 power supply (option)
- **Air filter washable**
- **2 USB ports**
- **Dimension:** 41(D) x 25.4 (W) x 17.5 (H) cm





606A3+U

PROPRIETARY NOTICE This drawing contains proprietary information of COMIX INTERNATIONAL Co. Ltd. Any duplication or use of this drawing, in whole or in part, without a written consent from COMIX INTERNATIONAL Co. Ltd. is strictly prohibited.		MATERIAL TOLERANCES UNLESS NOTED DECIMAL X.XX ±0.12 DECIMAL X.X ±0.25 DECIMAL X ±0.50 ANGULAR ±1°	
CUSTOMER APPROVAL 		PART NO	
PROJ		SCALE 1:1 DO NOT SCALE DWG	TITLE ASSY DRAWING
APP		MODEL 606A3+U	FILE NO 606A3+U-DIA
CHK			REV. 2
DGN		UNIT	SIZE A3
DRW angel	2007/02/26	mm	SHT 10F 1